

The Cloudworks logo consists of the word "cloudworks" in a white, lowercase, sans-serif font, centered within a solid orange rectangular box. The background of the slide is dark blue with various abstract shapes: a yellow circle in the top left, a teal circle, a light teal rounded rectangle, a grey circle, a teal circle, a yellow circle, and a large teal circle on the right side.

cloudworks

# IAM Governance

A non-technical introduction to governance !

Stefan Mehl-Ludvigsen  
Strategic IAM Advisor

stefan.mehl-ludvigsen@cloudworks.dk  
+45 2224 4517



# GOVERNANCE

## THE ART OF CONTROL & DIRECTION

# Governance

Governance refers to the system or process by which an organization or entity is controlled and operated. It's essentially about making decisions, setting direction, and ensuring accountability.



## Control

- Establishing rules, policies, and procedures to guide behavior.



## Direction

- Setting goals and objectives for the organization



## Accountability

- Determining who is responsible for what and ensuring they are held to account.



## Ethics

- Ensuring decisions align with moral and ethical principles



## Risk Management

- Identifying and mitigating potential risks.

# Maturity Levels



# Moving up the maturity ladder

Current State

Future State



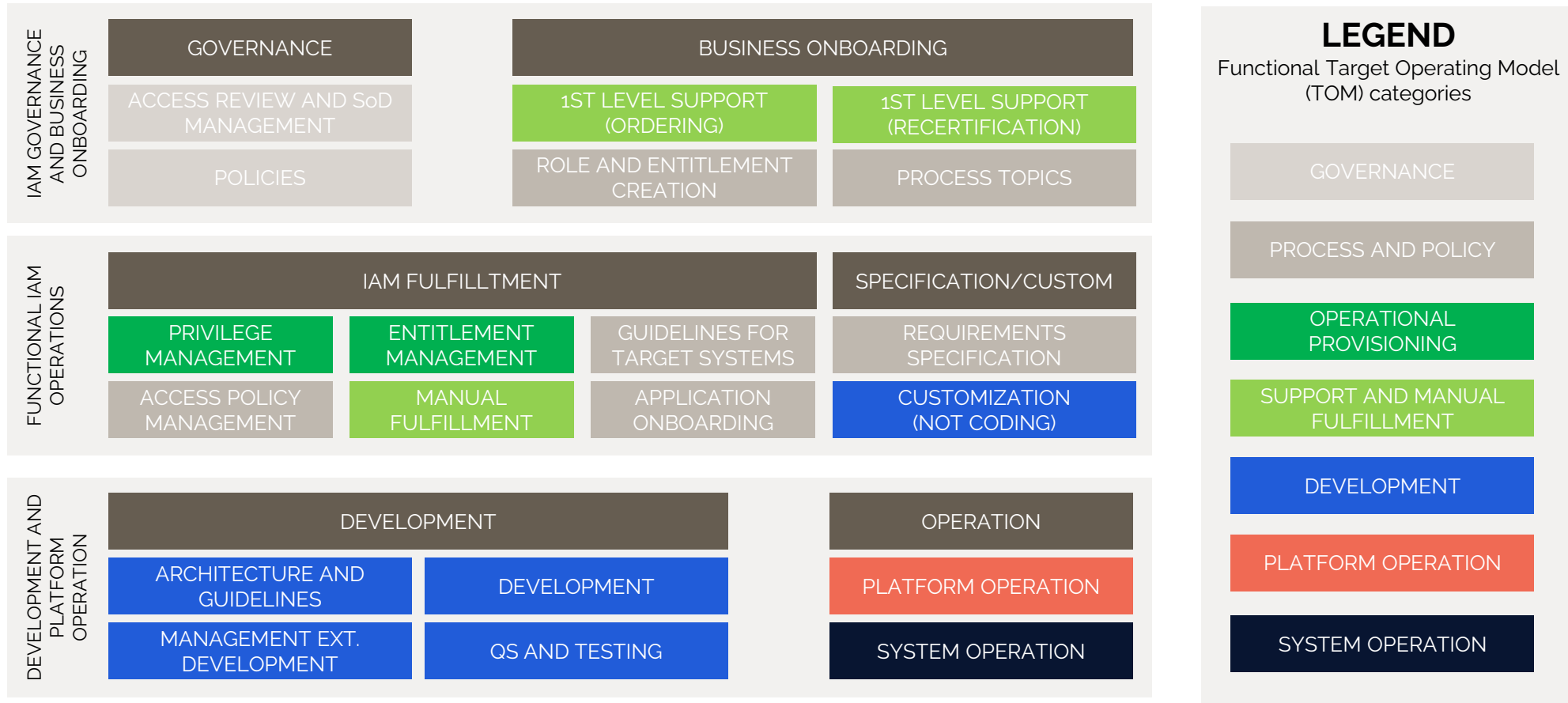
- No real processes for User Lifecycle Management.
- Few policies or guidelines for IAM.
- Products chosen on ad-hoc basis.
- Access governance is ad-hoc, requiring manual extraction and analysis.

IAM GOVERNANCE AND BUSINESS ONBOARDING	GOVERNANCE		BUSINESS ONBOARDING	
	ACCESS REVIEW AND SOD MANAGEMENT	POLICIES	1ST LEVEL SUPPORT (ORDERING)	1ST LEVEL SUPPORT (RECERTIFICATION)
			ROLE AND ENTITLEMENT CREATION	PROCESS TOPICS
FUNCTIONAL IAM OPERATIONS	IAM FULFILLMENT			SPECIFICATION/CUSTOM
	PRIVILEGE MANAGEMENT	ENTITLEMENT MANAGEMENT	GUIDELINES FOR TARGET SYSTEMS	REQUIREMENTS SPECIFICATION
	ACCESS POLICY MANAGEMENT	MANUAL FULFILLMENT	APPLICATION ONBOARDING	CUSTOMIZATION (NOT CODING)
DEVELOPMENT AND PLATFORM OPERATION	DEVELOPMENT		OPERATION	
	ARCHITECTURE AND GUIDELINES	DEVELOPMENT	PLATFORM OPERATION	
	MANAGEMENT EXT. DEVELOPMENT	OS AND TESTING	SYSTEM OPERATION	

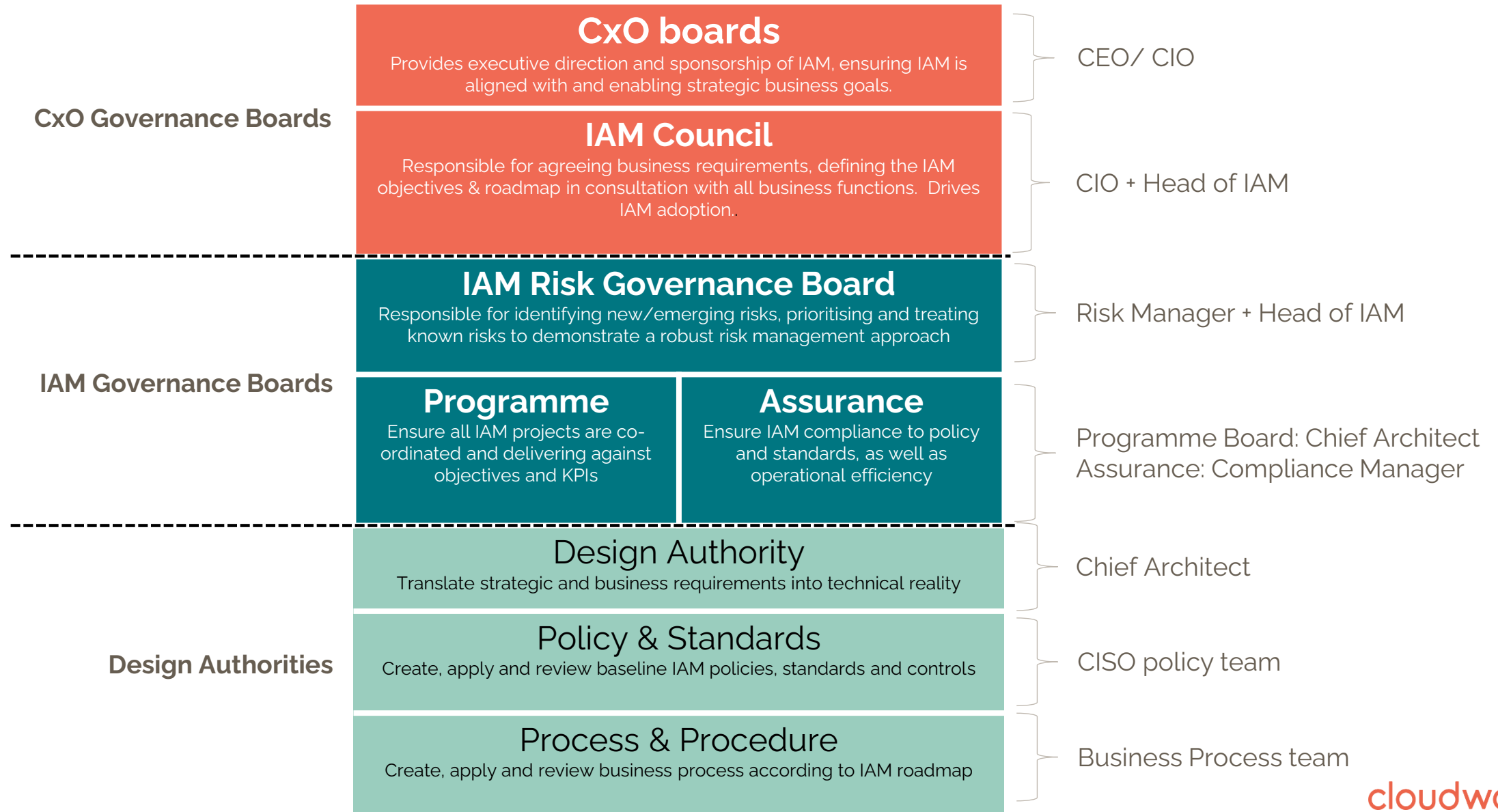
- Comprehensive set of IGA processes formally defined and implemented in an IGA tool.
- Vast majority of access entitlements are automatically assigned via policies.
- Complete IAM architecture, most IAM products are integrated. New products chosen and implemented based on this architecture.
- Policy based automation is used to optimize the access review processes. Individual reviews needed only for manually assigned entitlements.
- SoD controls managed for all types of systems.

# IAM Target Operating Model (TOM)

## Basic structure

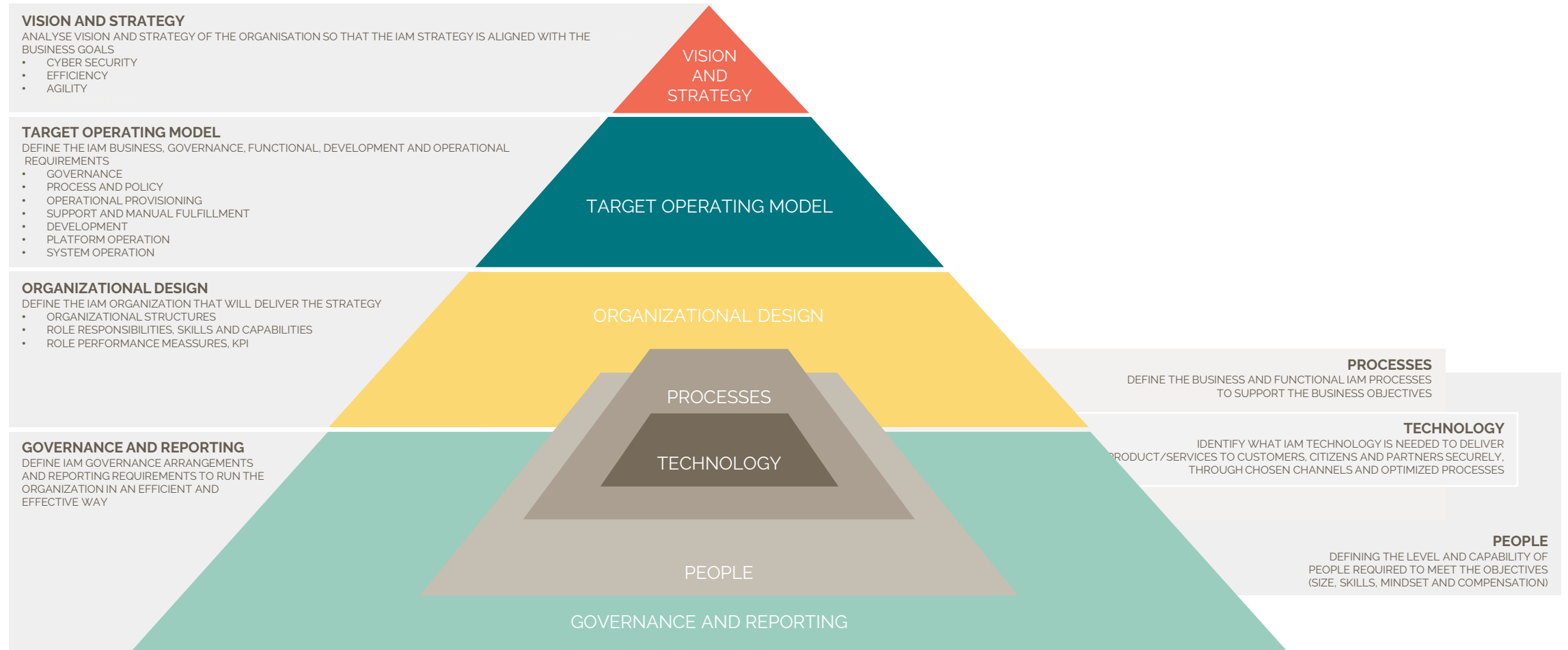


# IAM Governance Structure

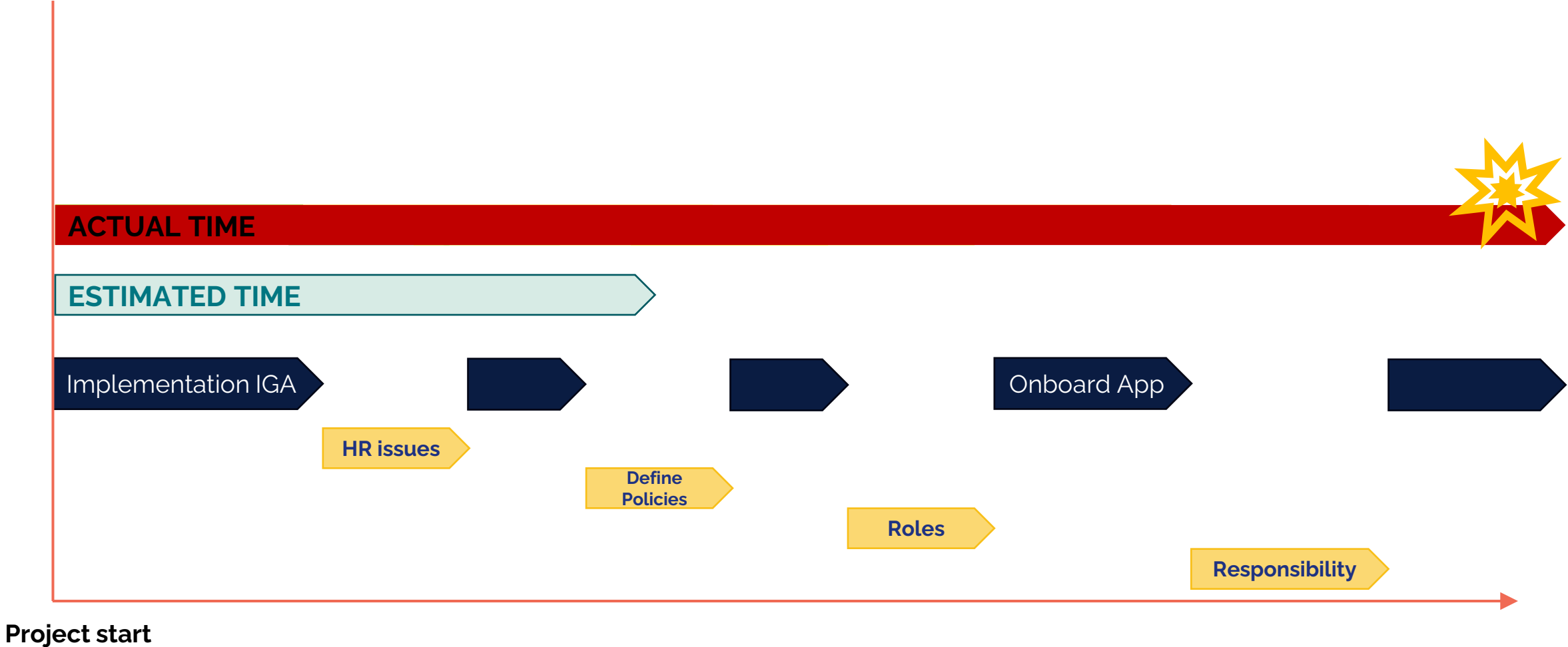


# IAM planning and execution

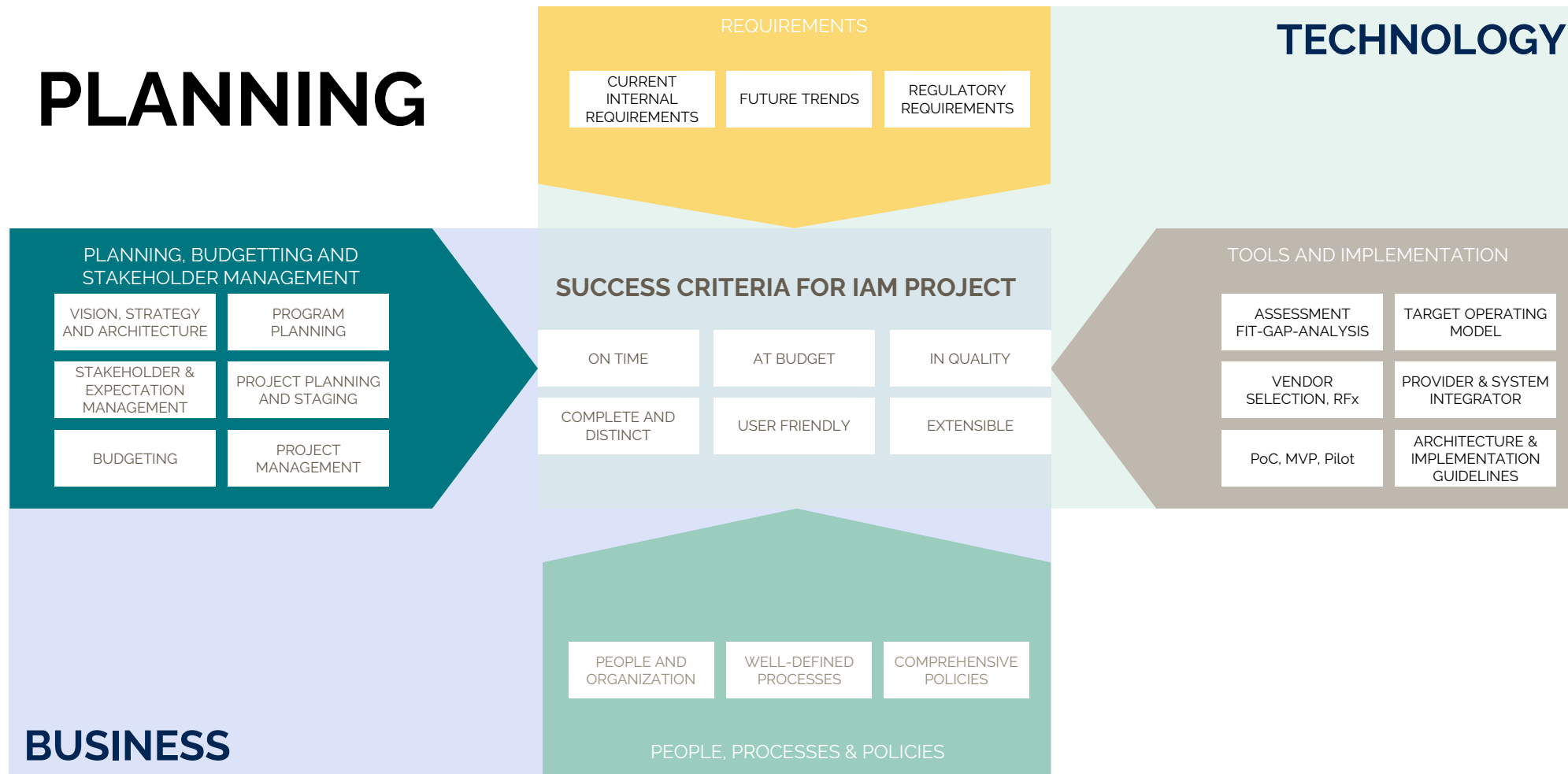
## Size and sequence of IAM planning elements



# Typical IGA Implementation Roadmap



# Planning is key to IAM success

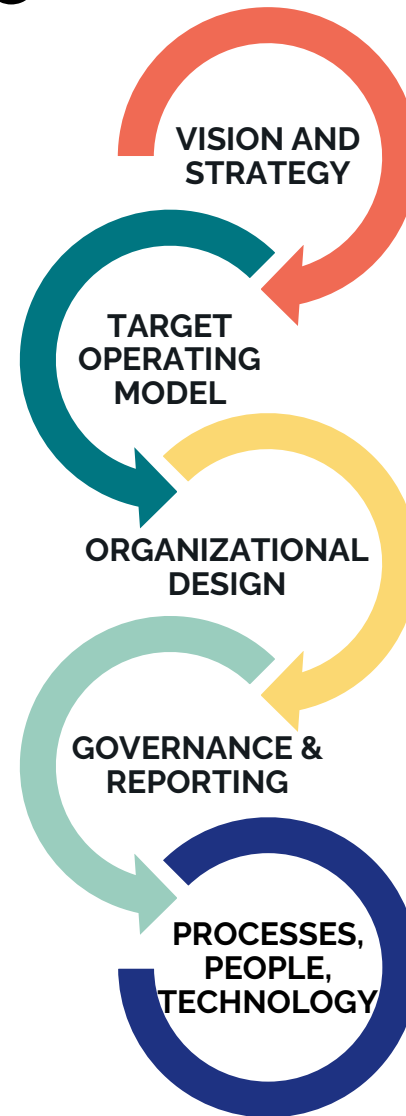


# Do IAM on purpose

Define the IAM business, governance, functional, development, and operational requirements.

- Governance
- Process and policy
- Operational Provisioning:
- Support and manual fulfillment
- Development
- Platform operation
- System operation

Define IAM governance arrangements and reporting requirements to run the organization in an efficient and effective way.



Analyze the vision and strategy of the organization so that the IAM strategy aligns with the business goals.

- Cyber security
- Efficiency
- Agility
- B2C/B2B centric

Define the IAM organization that will deliver the strategy.

- Organizational structures
- Role responsibilities, skills, and capabilities
- Role performance measures, KPIs

Define the business and functional IAM processes to support the business objectives.

Identify what IAM technology is needed to deliver products/services to customers, citizens, and partners securely, through chosen channels and optimized processes.

Define the level and capability of people required to meet the objectives (size, skills, mindset, and compensation).

# IAM Project Organization



# Where the work is

## PROCESSES

- Operational, tactical, strategic
- Cyber security
- User experiences

## MATURITY

### PEOPLE

- Organization (B2E)
- Partners (B2B)
- Customers (B2C)

### TECHNOLOGY

- Access control, "just in time", transparency
- IoT|OT



Thank You